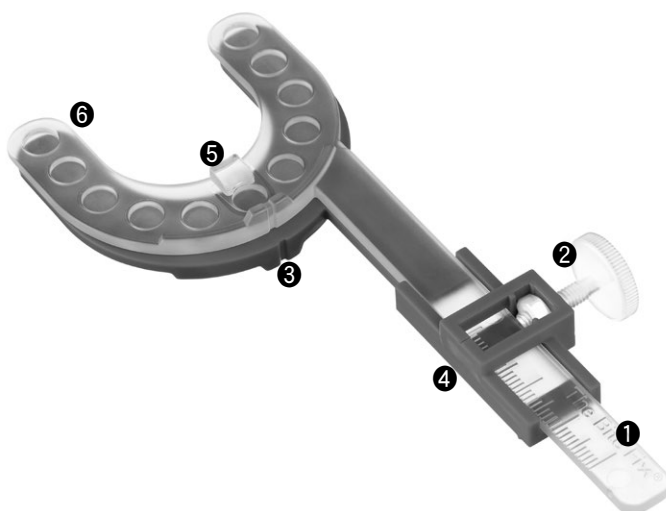
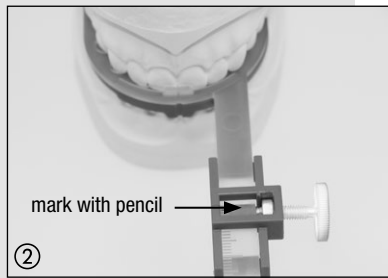
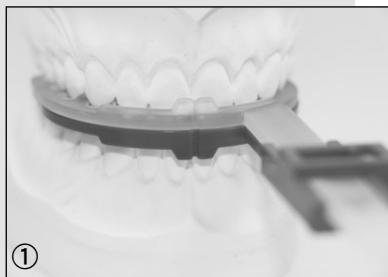


# Bite Fix® One bite registration

## Instructions for use



- ① Millimetre scale
- ② Fixing screw
- ③ Midline markings
- ④ Basic element
- ⑤ Incisor guidance
- ⑥ Bite fork

Loosen the fixing screw ② until the transparent bite fork can be moved.

Insert the Bite Fix® One bite registration into the patient's mouth, without any bite registration material yet on it, paying attention to align the bite fork centrally and using the midline marking ③ as an orientation aid (Fig. ①).

Instruct the patient to move the lower jaw in the central position first. In order to obtain a better result in case of insufficient stability at the incisors, apply some bite registration material to the area of the incisor guidance. ⑤. Mark the central position with a pencil on the millimetre scale (Fig. ②). Then instruct the patient to move the lower jaw to the maximal protrusion and mark the position on the bite fork (Fig. ② + ③).

Remove the Bite Fix® One bite registration from the patient's mouth. You can now calculate the advancement of the lower jaw based on the marked protrusion range for the appliance of your choice. Now fix the transparent bite fork with the desired protrusion adjustment using the fixing screw.

**Hint:** For the TAP® devices a protrusion adjustment of 50-60% is recommended.

Apply bite registration material to both sides of the bite fork. Reinsert the Bite Fix® One bite registration into the patient's mouth and check on a central alignment (Fig. ④).

Once the bite registration material has cured, you can remove the bite fork from the patient's mouth (Fig. ⑤).

**Hint:** We recommend a fast setting, addition-curing bite registration material on the base of vinylpolysiloxane (silicone). The bite fork should be well covered.

**Cleaning and maintenance:** The basic element ④ and the transparent bite fork ⑥ are for single use only!

**Hint:** Make sure not to use the Bite Fix® One bite registration in case it is visibly damaged or has been modified.

**For professional use only.**

