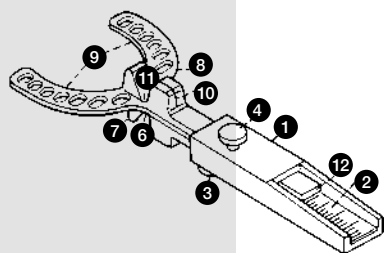


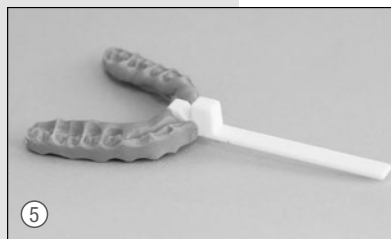
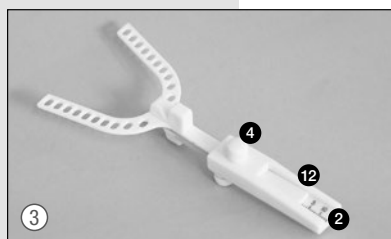
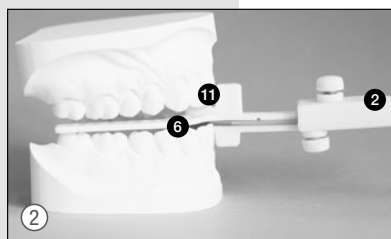
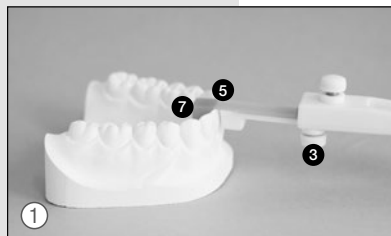
The GEORGE GAUGE™ Bite registration

Instructions for use



Components

- | | |
|-----------------------------------|---------------------------|
| ① Body of GEORGE GAUGE™ bite fork | ⑥ Lower incisor notch |
| ② mm scale | ⑦ Lower incisor clamp |
| ③ Clamping screw/lower jaw | ⑧ Bite fork |
| ④ Clamping screw/upper jaw | ⑨ Bite fork prongs |
| ⑤ Lower midline indicator | ⑩ Upper midline indicator |
| | ⑪ Upper incisor notch |
| | ⑫ Mark-out of bite fork |



- ① Loosen the lower clamping screw ③ and slide lower incisor clamp ⑦ forward. Center lower midline indicator ⑤ over central lower incisor, fix the lower incisor clamp ⑦ and tighten lower clamping screw ③. Remove GEORGE GAUGE™ bite registration from mouth and push the required bite fork ⑧ into body ①. Use grey fork for 2 mm and white fork for 5 mm distance between upper and lower incisors.
- ② Return the GEORGE GAUGE™ bite fork into mouth with the lower incisor recess ⑥ centrally over the lower incisors and instruct the patient to close into upper incisor notch ⑪, with upper midline indicator ⑩ centrally between upper incisors. Use a carbide cutter to modify the upper incisor notch ⑪, if for example upper incisors are badly rotated. Instruct patient to slide mandible first in centric relation, then as far as possible into protrusive relation, while observing these positions on the mm scale ② and eventually marking them with a pencil.
- ③ Calculate amount of protrusion needed for the appliance you are constructing for your patient based on this protrusive range. Remove from mouth and determine the mark-out of bite fork ⑫ to the determined position of the millimetre scale ② and fix the upper clamping screw ④.
- ④ Apply bite material to both sides of the bite fork. Return GEORGE GAUGE™ bite registration to mouth, with the lower incisor nut centrally over lower incisors. Instruct your patient to close into upper incisor nut using a mirror. If technique calls for maintaining a midline discrepancy, place mark on upper incisor to guide patient to proper transverse closure.
- ⑤ After registration material has sufficiently hardened remove from mouth and release upper clamping screw. Send construction bite and bite fork ⑧ along with models to lab.

Note:



We recommend a quick setting, addition-curing bite registration material based on vinyl polysiloxane (A-silicone). The bite fork should be well covered.

Hint on cleaning and maintenance:

Clean before use!
The body ① of the GEORGE GAUGE™ bite registration is reusable and can be sterilized in an autoclave at 121°C. Use a gentle program for thermolabile material.

Please note that the bite fork ⑧ is for single use only!

For professional use only.

Delivery Program:

GEORGE GAUGE™			
Bite registration, incl. 3 bite forks (1 fork each)	1 Set	REF 5471	
Bite fork, 2 mm, grey, small (S)	10 pcs.	REF 5472	
Bite fork, 5 mm, white, small (S)	10 pcs.	REF 5473	
Bite fork, 5 mm, white, large (L)	10 pcs.	REF 5462	

